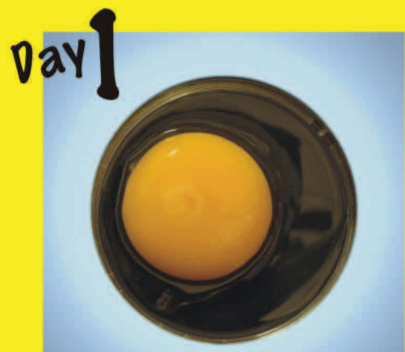


# Living Eggs

"..All you need to successfully hatch and raise chicks in the classroom"



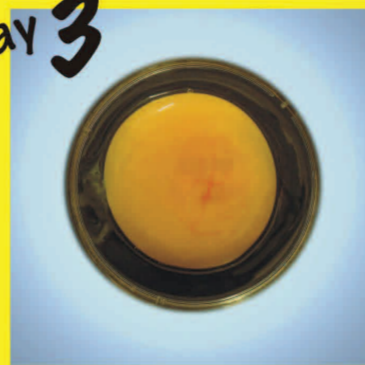
Day 1

16 hrs - First resemblance to a chick embryo  
18 hrs - Appearance of alimentary tract  
20 hrs - Appearance of vertebral column  
21 hrs - Beginning of nervous system  
22 hrs - Beginning of head  
24 hrs - Beginning of eye



Day 2

5 hours - Beginning of heart  
35 hours - Beginning of ear  
42 hours - Heart beats



Day 3

60 hours - Beginning of beak  
62 hours - Beginning of legs  
64 hours - Beginning of wings



Day 4

Beginning of tongue  
Eye pigmentation noticeable



Day 5

Formation of Reproductive organs and differentiation of sex.  
Development of leg joints



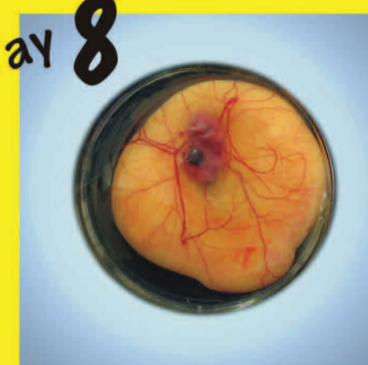
Day 6

Beak develops  
Voluntary movements commence



Day 7

Egg Tooth noticeable  
Comb begins to develop



Day 8

Beginning of feathers



Day 9

Commences swallowing amniotic fluids and albumen



Day 10

Beak starts to firm  
Egg tooth prominent



Day 11

Tail feathers appear



Day 12

Toes forming



Day 13

Appearance of scales & claws  
Feathers cover all of body



Day 14

Embryo moves into a position suitable for breaking shell (head towards the blunt end of egg)



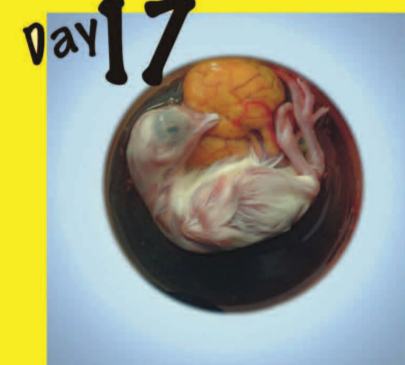
Day 15

At this stage embryo weighs approx. 12.5g  
Gut drawn into abdominal cavity



Day 16

Scales, claws & beak become firm and horny  
Albumen (white) is nearly all absorbed



Day 17

Beak turns towards air cell (blunt end of egg)



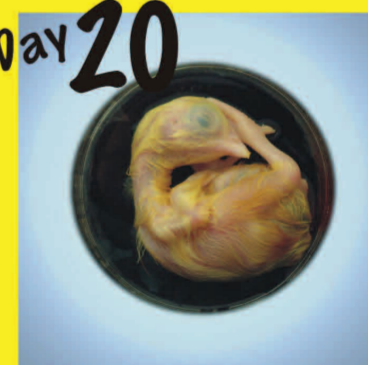
Day 18

Embryo almost completely developed



Day 19

Yolk sac begins to enter body cavity. Embryo weighs approx. 25g



Day 20

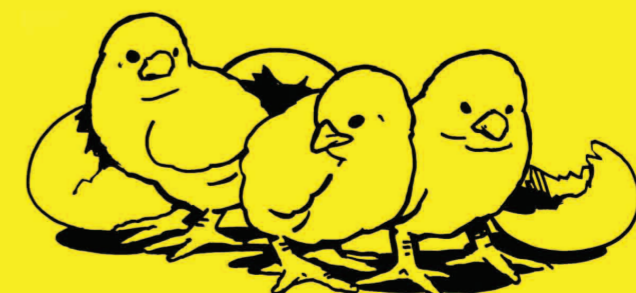
Yolk sac completely drawn into body cavity. Embryo occupies almost all of the space in the egg except the air cell. Embryo is now a chick and commences breathing in the shell. Pipping may start



Day 21

chick hatches

[www.livingeggs.co.uk](http://www.livingeggs.co.uk)  
[info@livingeggs.co.uk](mailto:info@livingeggs.co.uk)



Copyright Living Eggs Ltd. 2002